

## SIMPLE WESTERN CERTIFIED ANTIBODY DATASHEET

[View Antibody Link](#)

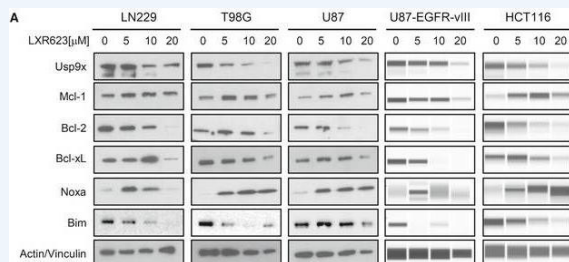


Figure: Treatment with LXR623 regulates the expression of pro-apoptotic Noxa, and increased Noxa levels mediate enhanced sensitivity to BH3 mimetics LN229, T98G, U87, U87-EGFRvIII, and HCT116 cells were treated with increasing concentrations of LXR623 for 72 h. Thereafter, protein lysates were collected and subjected to standard Western blot (LN229, T98G, and U87) or capillary electrophoresis (U87-EGFRvIII and HCT116) for the expression of Usp9X, Mcl-1, Bcl-2, Bcl-xL, Noxa, BIM, and/or actin and Vinculin. In U87-EGFRvIII and HCT116, Vinculin was used in lieu of actin. LN229, T98G, U87, U87-EGFRvIII, and HCT116 cells were treated with LXR623 as described in (A). Thereafter, protein lysates were collected and subjected to capillary electrophoresis for the expression of ABCA1 and Vinculin.

PROTEIN TARGET/ANTIBODY	
Protein Target	Bim (C34C5)
Protein Isoform	
Antibody Type	Primary
Host Species/Clonality	Mouse Monoclonal
ASSAY	
Sample Type	
Sample Concentration	Not_Stated
Antibody Concentration/Dilution	
Antibody Diluent	
Detection Mode	
Separation Type	Size
Matrix	
Observed kDa	

\*Image collected and cropped by CiteAb from the following publication <https://onlinelibrary.wiley.com/doi/10.15252/emmm.201910769> licensed under a CC-BY license

## PUBLICATIONS

1. Nguyen, T. T. T., Ishida, C. T., et al. Activation of LXR $\beta$  inhibits tumor respiration and is synthetically lethal with Bcl-xL inhibition. EMBO Mol Med. 2019 Oct;11(10):e10769. 10.15252/EMMM.201910769. PMID:31468706.
- 2.
- 3.
- 4.
- 5.
- 6.

This antibody is validated for Gel-Free, Blot Free, Hands Free Simple Western Systems. To learn about Simple Western Systems, available Simple Western antibodies, or new antibody submissions visit the links below. For additional information, please contact [support@proteinsimple.com](mailto:support@proteinsimple.com).

[Simple Western Systems](#)

[Simple Western Antibody Database](#)

[Simple Western Antibody Submission](#)

PAGE 2/2

**bio-techne**<sup>®</sup>

[bio-techne.com](http://bio-techne.com)

**Global** [info@bio-techne.com](mailto:info@bio-techne.com) [bio-techne.com/find-us/distributors](http://bio-techne.com/find-us/distributors) TEL +1 612 379 2956  
**North America** TEL 800 343 7475 **Europe | Middle East | Africa** TEL +44 (0)1235 529449  
**China** [info.cn@bio-techne.com](mailto:info.cn@bio-techne.com) TEL +86 (21) 52380373

Trademarks and registered trademarks are the property of their respective owners.